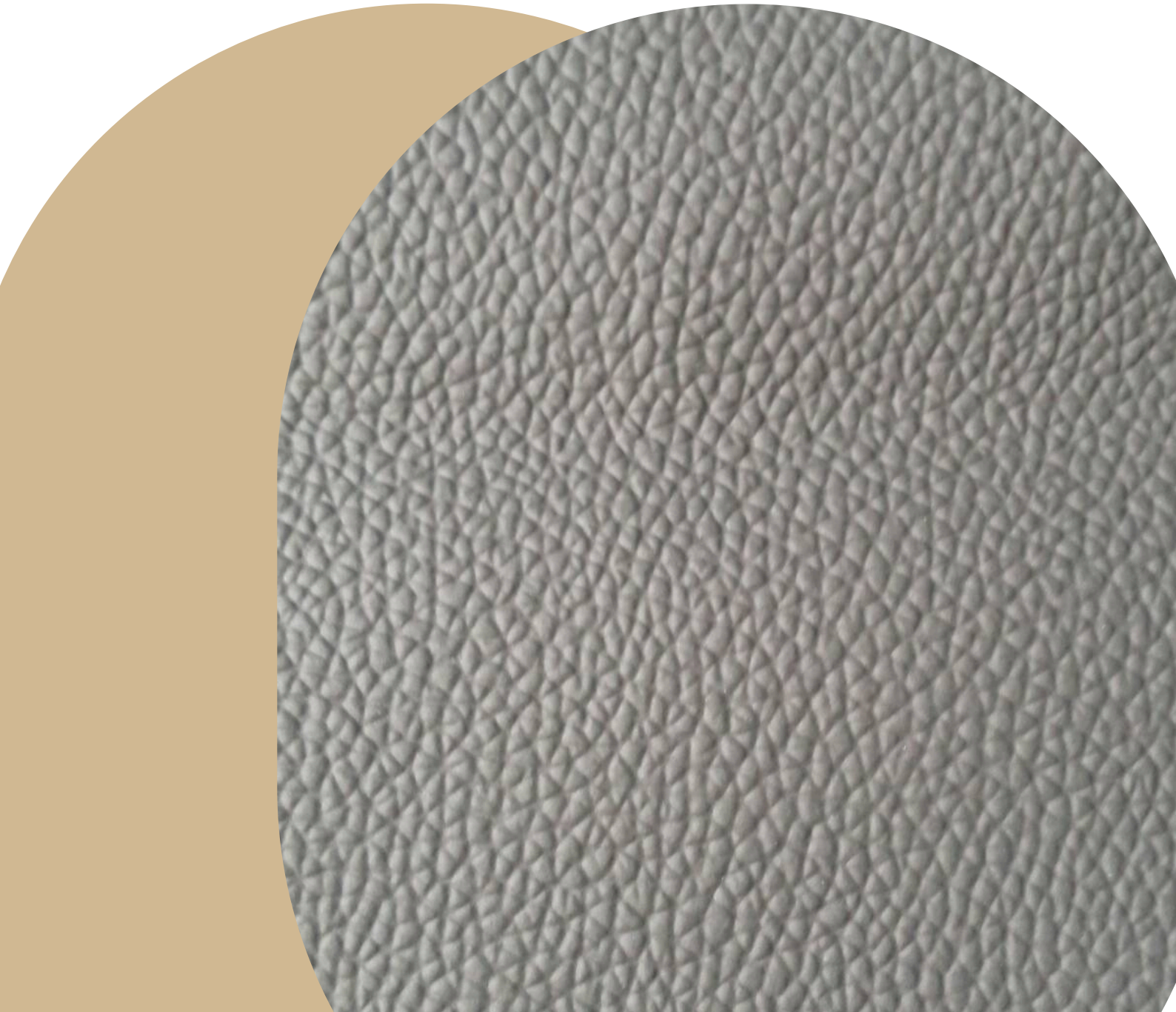


KURU TANNERY

THE ULTIMATE LEATHER COLLETION
2026



"Crafting Luxury and Comfort for Your Lifestyle, Your Journey, and Your Best Friend."

Established over 70 years ago, **Kuru Tannery** is a premier, vertically integrated manufacturer and global exporter built on seven decades of natural hide mastery. Evolving from an industrial tanning leader into a world-class, multi-industry design and manufacturing powerhouse, the company seamlessly bridges premium consumer goods with advanced food-grade pet care under a unified product ecosystem driven by our group promise: "Crafting Luxury and Comfort for Your Lifestyle, Your Journey, and Your Best Friend."

Operating out of our advanced facility in Samut Prakan, Thailand, Kuru Tannery serves as a trusted turnkey OEM and private label partner across three comprehensive commercial pillars:



Your Lifestyle: Handcrafted luxury leather furniture, custom-made bespoke furniture installations, premium fashion leather goods (handbags, purses, shopping bags), high-end corporate gifts, and specialized industrial gear.

Your Journey: High-performance upholstery leather and precision-engineered, custom-made automotive car seat covers.

Your Best Friend: 100% natural rawhide dog chews and innovative air-fried collagen treats manufactured under strict food-grade standards.

Kuru Tannery guarantees uncompromising quality and supply chain security, backed by ISO 9001:2015, GHP, and HACCP certifications. Committed to ethical and sustainable manufacturing, we are currently pursuing SMETA certification to ensure top-tier compliance for leading international brands across the USA, EU, UK, Japan, and South Korea.



KURU TANNERY

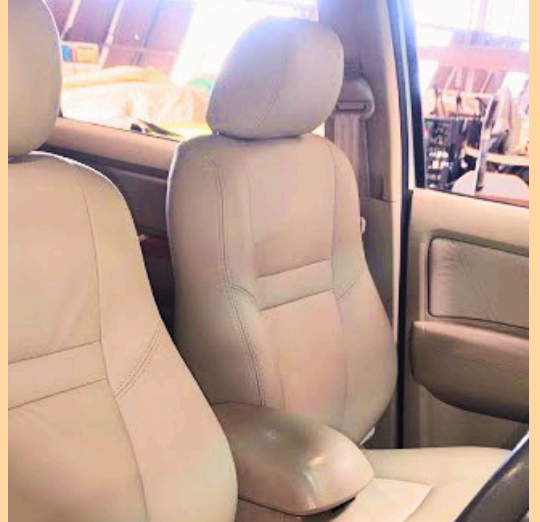
VERSATILE EXCELLENCE: FROM TANNED HIDE TO FINAL PRODUCT

Our premium leather is crafted to elevate quality in every application, from high-end fashion to durable goods and lifestyle products.



Applications: Our Leather Excellence
Premium leather engineered for every application:

- Fashion Goods : Supple, high-grade texture for luxury accessories.
- Home Furnishing : Durable, soft-touch finish for sophisticated furniture.
- Automotive : High-performance, heat-resistant leather for premium interiors.
- Pet Lifestyle : Safe, hygienic, and premium-quality material for pet products.



WHERE SOPHISTICATION MEETS SUBSTANCE

Premium leather solutions, meticulously engineered for your designs.

Crafting the perfect raw material for sustainable luxury. Our curated leather collections are engineered for creators who demand excellence, helping you drive innovation and elevate your lifestyle in every detail.



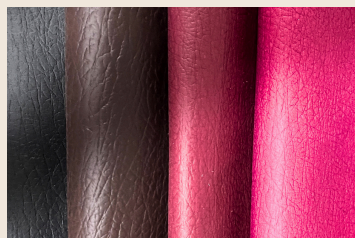
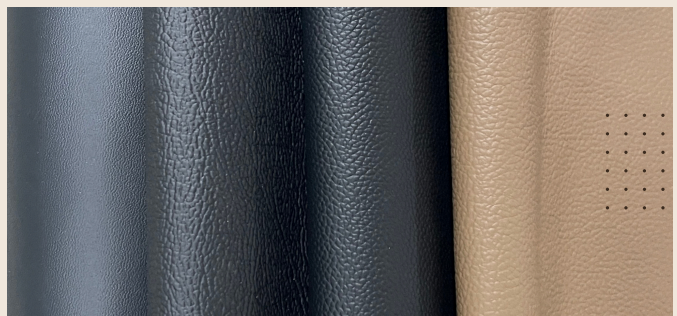
Living Space: Revolutionizing living spaces with exceptionally soft, tactile upholstery. Engineered for handcrafted luxury furniture and bespoke architectural installations



Moving Luxury: Elevating the driving experience with high-performance automotive leather. Rigorously tested for durability without compromising the sleek elegance of high-end transport design.



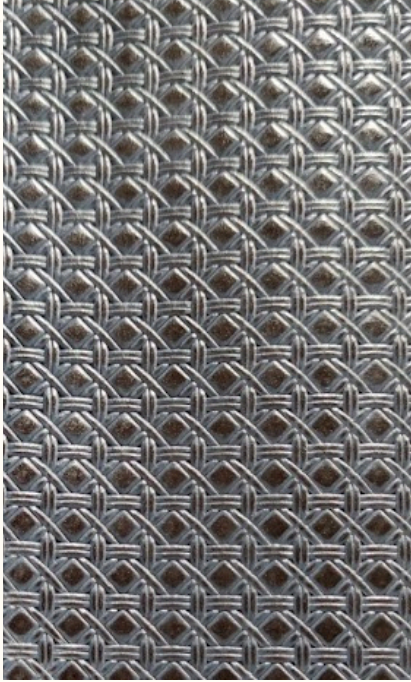
Fashion & Identity: Unleashing imagination into premium fashion leather. From iconic runway handbags and statement purses to bespoke corporate gifts and specialized industrial gear.



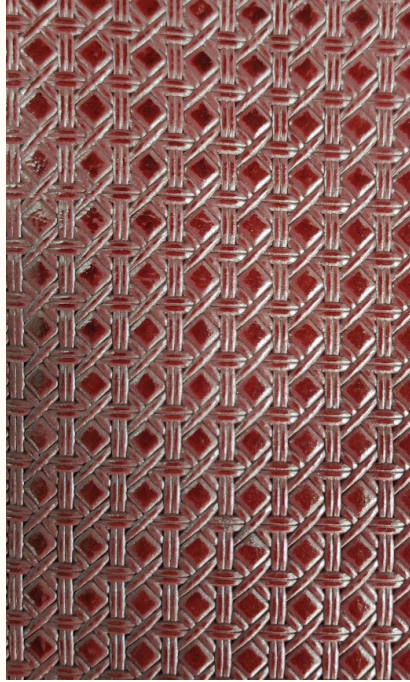
From your favorite sofa in the living room, to the driver's seat of a grand tourer, to the luxury handbag carried by your side... Our finished leather is ready to elevate your brand into the ultimate definition of premium.

RHOMBUS LUXE SERIES

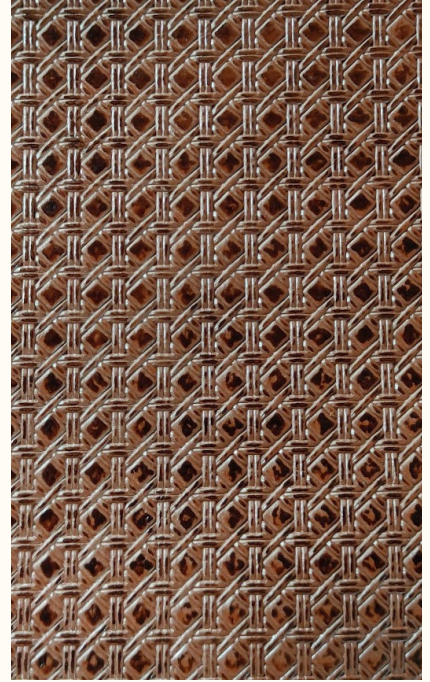
A SOPHISTICATED FUSION OF GEOMETRIC PRECISION AND CLASSIC WOVEN TEXTURE, DESIGNED FOR TIMELESS ELEGANCE.



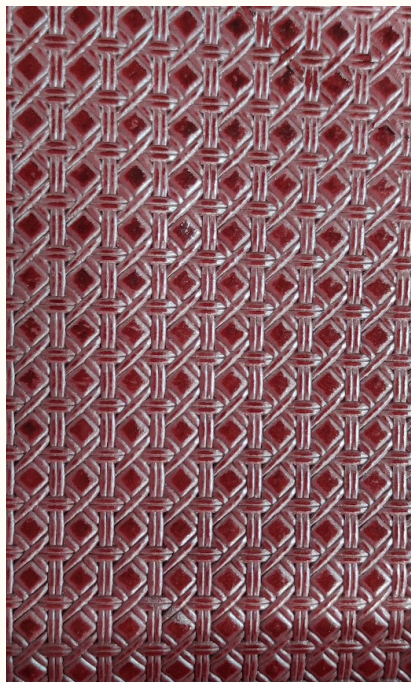
CODE: RL-BLK
NIGHTFALL BLACK



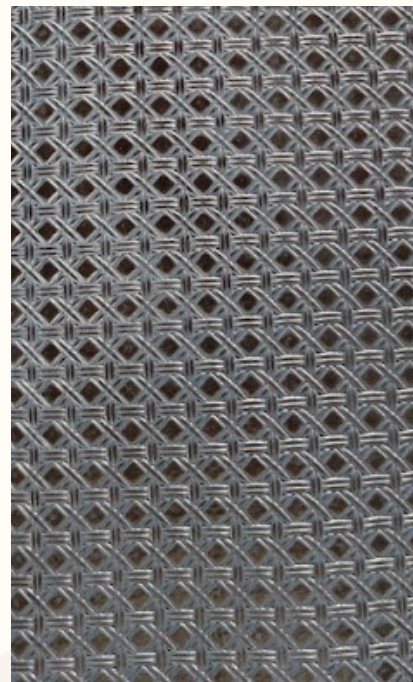
CODE: RL-BRN
RICH ESPRESSO



CODE: RL-TAN
TOASTED PECAN



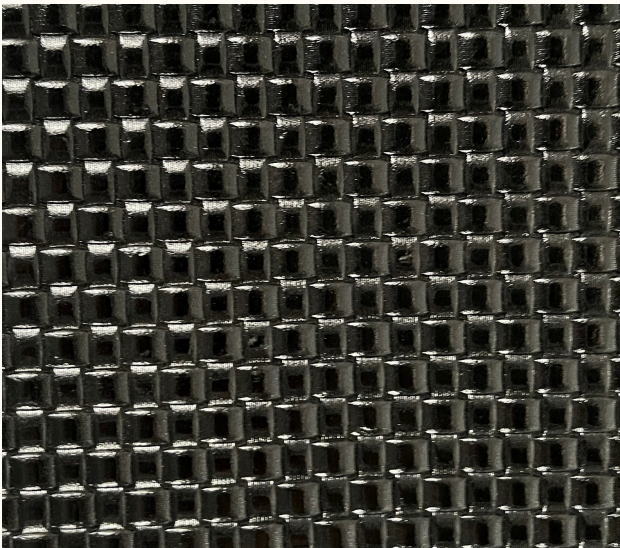
CODE: RL-BUR
BURGUNDY WINE



CODE: RL-NAV
DEEP NAVY

CHEVRON BLOCK SERIES

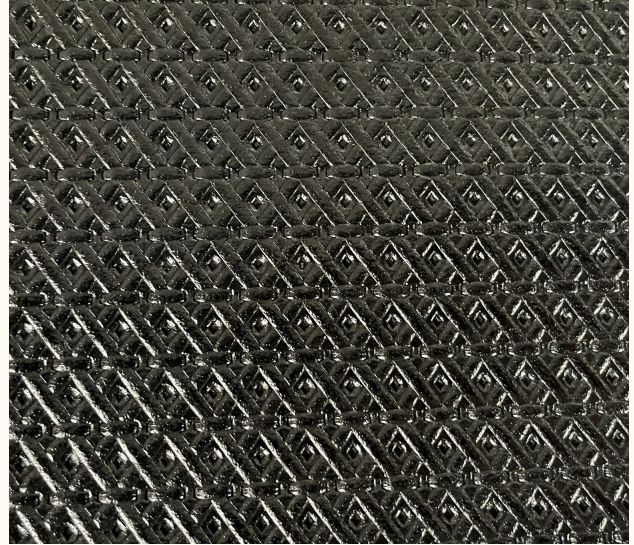
A MODERN TAKE ON TRADITIONAL CRAFTSMANSHIP, FEATURING A BOLD AND STRUCTURED INTERLOCKING BLOCK PATTERN.”



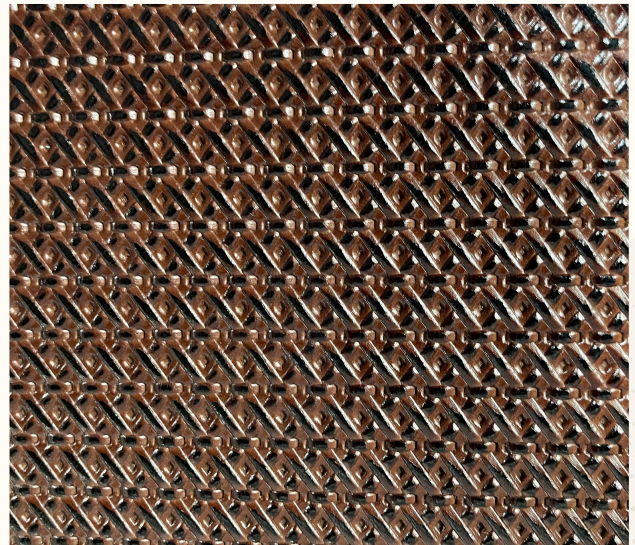
CODE: CB-BLK
ONYX GLANCE

DIAMOND WEAVE SERIES

“A SOPHISTICATED FUSION OF GEOMETRIC PRECISION AND CLASSIC WOVEN TEXTURE, DESIGNED FOR TIMELESS ELEGANCE.”



CODE: DW-BLK
NIGHTFALL BLACK



CODE: DW-RBRN
RICH ESPRESSO

ESSENTIAL MATTE SERIES

*“THE EPITOME OF MINIMALIST LUXURY. SILKY SMOOTH TO THE TOUCH
WITH A REFINED, UNDERSTATED FINISH.”*



CODE: EM-BLK
OBSIDIAN BLACK



CODE: EM-BLU
SLATE BLUE



CODE: EM-BRN
MOCCA BROWN



CODE: EM-MER
CRIMSON MERLOT



CODE: EM-TAN
SADDLE TAN

RAW ELEGANCE SERIES

“BOLD, EXPRESSIVE, AND FULL OF CHARACTER. FEATURING AN ORGANIC CRINKLED TEXTURE THAT STANDS OUT IN ANY DESIGN.”



CODE: RE-BLK
CHARCOAL BLACK



CODE: RE-DBRN
DARK COCOA



CODE: RE-PLU
SMOKED PLUM



CODE: RE-PIN
WILD ORCHID

SIMPLY THAI



THE NEW FACES CHANGING FASHION CULTURE

FASHION TIPS FOR EVERY SEASON

THE VINTAGE REVIVAL: WHY OLD IS THE NEW COOL

COLOR THERAPY: WHAT YOUR PALETTE SAYS ABOUT YOU



Crafting Minimalist Defining Style

Product details (Top-Bottom)

Code: Quinn

Color: MoCCA Brown

Crimson Merlot

Obsidian Black

Saddle Tan

Slate Blue

Size: 26.0*15.0*5.5 cm.

The "QUINN" Series

Where modern versatility meets traditional soul. The Quinn Clutch & Crossbody features a sleek, architectural foldover silhouette crafted from premium, butter-soft leather. Its defining detail—a single, continuous horizontal band of intricate Thai interwoven heritage—creates a striking visual balance. Engineered with a detachable strap, it effortlessly transitions from a dynamic daytime crossbody for the modern professional to a minimalist evening clutch. A true embodiment of Quiet Luxury for the global citizen.



The "METROPOLIS" Series

Kubic Tote



Designed for the global executive who values heritage and functionality. The Metropolis Series pairs a structured, high-capacity commuter tote with matching premium tech pouches. Crafted in stealth matte black, the series showcases a bold juxtaposition of expansive smooth leather and structured vertical/horizontal artisanal weaves. The tote delivers a commanding presence in the boardroom, while the impeccably organized pouches secure your daily essentials with a tactile, handcrafted touch. Pure sophisticated utility.



The Center horizon, A single horizontal band of traditional weave contrasted against smooth premium leather—the epitome of clean, minimalist balance.

Code: KUBIC-CEN

Color: NIGHTFALL BLACK

Size: 38.0*27.0*11.5 cm.



The Heritage Stripe Bold vertical bands of intricate Thai interwoven heritage pattern, creating a striking architectural rhythm across the entire silhouette.

Code: KUBIC-HER

Color: NIGHTFALL BLACK

Size: 38.0*27.0*11.5 cm.

The "METROPOLIS" Series

Leo Pouches



The Leo Pouches Designed as the ultimate companion to the executive tote. These premium pouches echo the series' signature stealth matte black leather and artisanal weaves, meticulously scaled to organize your daily tech, travel, and lifestyle essentials. Handcrafted luxury meets flawless organisation for the modern professional on the move.



The Woven Face Layout

Showcasing the signature artisanal weave on the main front panel, framed beautifully by smooth matte black leather along the sides and top.

Code: LEO-WF

Color: NIGHTFALL BLACK

Size: 18.0*12.0*5.5 cm.



The Sleek Face Layout

A modern inversion featuring an expansive smooth leather front panel, while the intricate handcrafted weave wraps elegantly around the top and side gussets.

Code: LEO-SF

Color: NIGHTFALL BLACK

Size: 18.0*12.0*5.5 cm.

The Craft-Pack Series



An exquisite celebration of raw texture and structured form. The Craft-Pack Series reimagines traditional Thai weaving into an oversized, high-tactility statement piece. Perfect as a luxury artisanal wine carrier or a statement urban tall-tote, this design features a rich, half-body interlocking weave pattern contrasted against a premium smooth leather top flap and reinforced handles. It's an artistic talk-piece that showcases maximum craftsmanship, tailored for those who dare to stand out with authentic cultural elegance.

Sleek and commanding. A premium black leather wine carrier featuring a half-body interlocking weave pattern—the perfect statement of modern elegance.

Color: Nightfall Black
Size: 25.0*40.0*9.5 cm.



Rich and timeless. A sophisticated wine carrier in deep reddish-brown leather, blending artisanal Thai heritage with classic luxury.

Color: Rich Espresso
Size: 25.0*40.0*9.5 cm.



Bespoke Leather Craft

Corporate Gifts &
Custom OEM Solutions

10 Easy DIY...
Best Gift Ideas...
Secret Tips...

Premium Corporate Gifts
Full-Service OEM Production
Custom Branding & Logotype

Tailored luxury gifts to elevate your
brand identity



3 5 4 6 8 9 5 0 1 8 7 8 4

www.kurutannery.com





P R O D U C T O F T H A I L A N D

KURU TANERY CO.,LTD.

730 SUKHUMVIT KM.30, TAIBAN, SAMUTPRAKARN 10280 THAILAND

TEL: +66 2 387 0075 TO 6

EMAIL: INFO@KURUTANNERY.COM

WWW.KURUTANNERY.COM